

## The front office wide format scanner fi-7460 Document Scanner

Designed for heavy workloads and engineered to last, the fi-7460 scanner offers wide-format scanning in a compact, best-in-class space. Robust feeding of mixed documents and automatic stacking technology reduces document handling time and total cost of scanning.



### Image Quality

This wide-format scanner is built with powerful charge-coupled device (CCD) cameras to capture large, double-letter and odd sized papers with clarity and color precision. These dual CCDs capture both sides of a document with accurate focus and color reproduction while maintaining rated speeds.

### Paper Feeding

Engineered for superior paper feeding, the fi-7460 can easily handle thick, thin, wide, and narrow documents. The 100 page feeder feeds in stacks of pages rapidly. With smart skew resistance, a built-in manual feed mode switch, and automatic stacking technologies, feeding and retrieval is simple and efficient.

### Reliability

The fi-7460 is built to last and powers up every time you need it, regardless of job size. Strong urethane rollers, heavy duty motors, a sturdy frame, and durable consumables combine for a long-lasting scanner that will let your organization capture the volumes of paper from seasonal peaks and heavy backlogs worry free. Backed by US-based, legendary solutions architects and support teams.



#### PaperStream IP

Compatible with all major document management software packages, PaperStream IP (PSIP) is a TWAIN/ISIS® compliant driver that cleans up and optimizes scanned images without any configuration.

#### PaperStream Capture

Take advantage of powerful indexing and sorting features, putting the document in the right location for great organization and fast retrieval. Now includes both 2D and 1D barcode support in the box.

#### PaperStream ClickScan

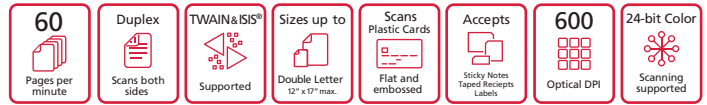
Easy-to-use capture software for any business. Simple scanning interface with 3-steps: scan, select destination, and save.

#### Scanner Central Admin

Increase IT efficiency by using our free software to monitor, update, and deploy a fleet of scanners.

# The front-office wide format scanner

## fi-7460 Document Scanner



### Technical Information

<b>Scanner Type</b>	ADF (Automatic Document Feeder) / Manual Feed, Duplex	<b>Power Consumption</b>	Operating Mode: 36 W or less Sleep Mode: 1.4 W or less (LAN) / 1.4 W or less (USB) Auto Standby (Off) Mode: 0.3 W or less
<b>Scanning Speed</b> <sup>*1</sup> (A4 Landscape) (Color / Grayscale <sup>*2</sup> / Monochrome <sup>*3</sup> )	Simplex: 60 ppm (200/300 dpi) Duplex: 120 ipm (200/300 dpi)	<b>Operating Environment</b>	Temperature: 41 to 95°F (5 to 35°C) Relative Humidity: 20 to 80% (non-condensing)
<b>Image Sensor Type</b>	CCD x 2 (front x 1, back x 1)	<b>Environmental Compliance</b>	ENERGY STAR®, RoHS
<b>Light Source</b>	White LED Array x 4 (front x 2, back x 2)	<b>Dimensions</b> <sup>*15</sup> (Width x Depth x Height)	15.0 x 8.2 x 6.6 in. (380 x 209 x 168 mm)
<b>Optical Resolution</b>	600 dpi	<b>Weight</b>	16.72 lbs (7.6 kg)
<b>Output Resolution</b> <sup>*4</sup> (Color / Grayscale / Monochrome)	50 to 600 dpi (adjustable by 1 dpi increments) 1,200 dpi (driver) <sup>*5</sup>	<b>Supported Operating System</b>	Windows® 11, Windows® 10 <sup>*16</sup> , Windows® Server 2022, Windows® Server 2019, Windows® Server 2016, Linux (Ubuntu)
<b>Output Format</b>	Color: 24-bit, Grayscale: 8-bit, Monochrome: 1-bit	<b>Included Software / Drivers</b>	PaperStream IP Driver (TWAIN/TWAIN x64/ISIS), WIA Driver <sup>*15</sup> , Image Scanner Driver for Linux (SANE) <sup>*15</sup> <sup>*16</sup> , PaperStream Capture, PaperStream ClickScan <sup>*16</sup> , Software Operation Panel, Error Recovery Guide, ABBYY FineReader for ScanSnap™ <sup>*16</sup> , Scanner Central Admin
<b>Background Colors</b>	White/Black (selectable)	<b>Image Processing Functions</b>	Multi image output, Automatic color detection, Blank page detection, Dynamic threshold (iDTC), Advanced DTC, SDTC, Error diffusion, Dither, De-Screen, Emphasis, Dropout color (None/Red/Green/Blue/White/Saturation/Custom), sRGB output, Hole punch removal, Index tab cropping, Split image, De-Ske w, Edge correction, Vertical streaks reduction, Cropping, Static threshold
<b>Document Size</b>	Maximum <sup>*6</sup> : 12 in. x 17 in. (304.8 x 431.8 mm) Minimum: 2 in. x 2.72 in. (51 x 69 mm) Long Page Scanning <sup>*7</sup> : 220 in. (5,588 mm)	<b>Included Items</b>	ADF paper chute, AC cable, AC adapter, USB cable, Setup DVD-ROM
<b>Paper Weight (Thickness)</b>	7.2 to 110 lb (27 to 413 g/m <sup>2</sup> ) <sup>*8</sup>	<b>Standard Model</b>	PN: PA03710-B055 (trade compliant) <sup>*17</sup>
<b>Paper Plastic Card</b>	0.055 in. (1.4 mm) or less <sup>*9</sup>	<b>Certifications</b>	Tungsten® VRS Elite
<b>ADF Capacity</b> <sup>*10</sup> <sup>*11</sup>	100 sheets (Letter 20 lb or A4 80 g/m <sup>2</sup> ) 50 sheets (Double Letter 20 lb)	<b>Warranty</b>	3 Months Basic Onsite Service
<b>Expected Daily Volume</b> <sup>*12</sup>	18,000 sheets		
<b>Multifeed Detection</b>	Overlap detection (Ultrasonic sensor) Length detection		
<b>Paper Protection</b>	Lag detection, Sound detection (iSOP) <sup>*13</sup>		
<b>Interface</b>	USB 3.0 / USB 2.0 / USB 1.1		
<b>Power Requirements</b>	AC 100 to 240 V 50/60Hz		

### Service Programs & Options

<b>ScanCare</b>	S7460-SCMYNBD-3	3-year scanner contract with parts, consumables, labor, training, 1 cleaning visit per year, and next business day response time	<b>Industry-leading support keeps digital transformation projects on-time and on budget</b> <ul style="list-style-type: none"> <li>• U.S. based support</li> <li>• Specialized Teams</li> <li>• Flexible service programs</li> </ul>
	S7460-SCPWNBD-1	1-year scanner contract with parts, consumables, labor, training, 1 cleaning visit per year, and next business day response time	
<b>Basic</b>	S7460-BAMYNBD-3	3-year scanner contract with parts, labor, 1 cleaning visit per year, and next business day response time	
	S7460-BAPWNBD-1	1-year scanner contract with parts, labor, 1 cleaning visit per year, and next business day response time	
<b>Advance Exchange</b>	S7460-AEMYNBD-3	3-year scanner contract shipping a replacement unit shipped overnight*	
	S7460-AEPWNBD-1	1-year scanner contract shipping a replacement unit shipped overnight*	
<b>PaperStream Capture Pro</b>	PSCP-DP-0001	PaperStream Capture Pro Departmental software license	

### Consumables and Options

<b>Imprinter (Post)</b>	PA03710-D401	User installable. Prints a string of characters on the back of document after scan
<b>Print Cartridge</b>	CA00050-0262	Lifetime: approx. 4,000,000 printed characters
<b>Brake Roller</b>	PA03710-0001	Lifetime: approx. 200,000 sheets or 1 year
<b>Pick Roller</b>	PA03670-0002	Lifetime: approx. 200,000 sheets or 1 year
<b>ScanAid Kit</b>	CG01000-288201	Consumable kit with instructions and cleaning supplies



<sup>\*1</sup> Actual scanning speeds may vary with data transmission and software processing times. <sup>\*2</sup> Indicated speeds are from using JPEG compression. <sup>\*3</sup> Indicated speeds are from using TIFF CCITT Group 4 compression. <sup>\*4</sup> Selectable maximum resolution may vary depending on the length of the scanned document. <sup>\*5</sup> Limitations may apply to the size of documents that can be scanned, depending on system environment, when scanning at high resolution (over 600 dpi). <sup>\*6</sup> Maximum document width possible for scanning is 9.5 in. (240 mm). <sup>\*7</sup> 200dpi or less : 220 inch, 300dpi or less : 215inch, 400dpi or less : 160inch, 600dpi or less : 106.3inch. <sup>\*8</sup> Thicknesses of up to 34 to 56 lb (128 to 209 g/m<sup>2</sup>) can be scanned for A8 ( 2.1 x 2.9 in. / 52 x 74 mm) sizes. <sup>\*9</sup> Continuous feeding is supported when scanning up to 10 unembossed cards with thicknesses of 0.76 mm or less. <sup>\*10</sup> Maximum capacity depends on paper weight and may vary. <sup>\*11</sup> Capable of setting additional documents while scanning. <sup>\*12</sup> Numbers are calculated using scanning speeds and typical hours of scanner use, and are not meant to guarantee daily volume or unit durability.

<sup>\*13</sup> Intelligent Sonic Paper Protection. <sup>\*14</sup> Excludes the ADF paper chute and stacker. <sup>\*15</sup> Functions equivalent to those offered by PaperStream IP may not be available with the Image Scanner Driver for macOS/Linux or WIA Driver. <sup>\*16</sup> Refer to the fi Series Support Site for driver/software downloads and full lineup of all supported operating system versions. [www.pfu-us.ricoh.com](http://www.pfu-us.ricoh.com). <sup>\*17</sup> EPEAT is Silver. <sup>\*18</sup> fi Series scanners do not run with Windows® 11 and 10 ARM-based PCs.

\*Replacement units shipped overnight for all requests received by 2 P.M. PST, Monday-Friday

#### Trademarks

ISIS is a trademark of OpenText. Microsoft, Windows, and Windows Server are either registered trademarks or trademarks of Microsoft Corporation in the United States and/or other countries. macOS is a trademark of Apple Inc., registered in the U.S. and other countries. Linux is the registered trademark of Linus Torvalds in the U.S. and other countries. Any other products or company names appearing in this document are the trademarks or registered trademarks of the respective companies.

#### Safety Precautions

Please carefully read the safety precautions prior to the use of this device and follow the recommended instructions for correct use. Do not place this device in wet, moist, highly humid, dusty or oily areas. Use of this device under such conditions may result in electrical shock, fire or damage to the device. Please use this device within the power ratings listed.

#### ENERGY STAR®

PFU Limited, a Ricoh company, has determined that this product meets the ENERGY STAR® guidelines for energy efficiency. ENERGY STAR® is a registered trademark of the United States. Specifications are subject to change without notice.