

POS



Coupon



Fiscal



Kiosk



Gaming & Lottery



Kitchen

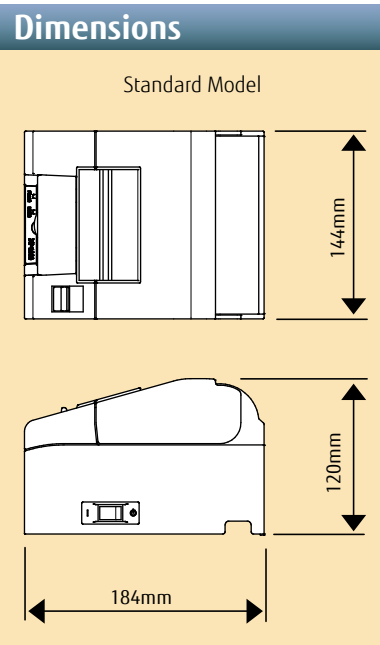


FUJITSU FP-1000 Specifications							
Printing Technology	Direct Line Thermal Method						
Print Resolution	8 dot/mm (0.125mm/dot) 203dpi						
Printing Speed	Maximum 180mm/s (Monochrome only)						
Paper Feed-out Direction	Top feed out						
Cutter Method	Partial cut						
Installation Direction	Two ways (Horizontal / Vertical) *1						
Paper	Paper width	80mm, 58mm,					
	Outer Diameter of Roll Paper	Φ83mm Maximum					
	Paper Thickness	65µm - 85µm					
Maximum 58mm Width paper	48mm (384dots) or 52.5mm (420dots)						
Print Width 80mm Width paper	64mm (512dots) or 72mm (576dots)						
Font size and Column	203dpi(Normal Mode)		Approx. 180dpi (EXtended Mode)				
	Font A (Column)	Font B (Column)	Font C (Column)	Font A (Column)	Font B (Column)		
Paper Width 58mm	Body Face	12x24 (32 or 35)	10x24 (38 or 42)	8x16 (48 or 52)	12x24 (32 or 35)	10x24 (38 or 42)	9 x24 (42 or 46)
	Letter Face	11x22 (32 or 35)	9 x17 (38 or 42)	8x13 (48 or 52)	12x24 (32 or 35)	9 x22 (38 or 42)	9 x22 (42 or 46)
Paper Width 80mm	Body Face	12x24 (42 or 48)	10x24 (51 or 57)	8x16 (64 or 72)	12x24 (42 or 48)	10x24 (51 or 57)	9 x24 (56 or 64)
	Letter Face	11x22 (42 or 48)	9 x17 (51 or 57)	8x13 (64 or 72)	12x24 (42 or 48)	9 x22 (51 or 57)	9 x22 (56 or 64)
Character Sets	ANK(95 char.), International Character(16 sets), Down-loaded registration (96 char.) Extended graphics 128*20 pages (including user-defined page)						
Barcode	Barcode	UPC-A, UPC-E, JAN13(EAN), JAN8(EAN), CODE39, ITF, CODABAR(NW-7), CODE93, CODE128					
	Two dimensional code	QR code					
Receive Buffer	Max. 4KB						
Logo Store Memory	Max. 576KB						
Paper Near End & Paper End	Available						
Internal Buzzer	Available to notice errors and printer status						
Interface	Triple	RS232C(9 pins) + USB(2.0 Full-speed) + LAN(Wired, 10BASE-T/100BASE-TX)					
	Dual	RS232C(25 pins) + USB(2.0 Full-speed) Bluetooth(V3.0/Power Class 2/SPP) + USB(2.0 Full-speed)					
Software Interface	ESC/POS emulation						
Drawer Interface	2 Drawers Controllable						
Software	Printer Driver	Windows	Windows driver *4 OPOS driver (Ver.1.13)*6 JavaPOS driver (Ver.1.10) *3	Windows Server® 2008 R2, Windows® 7, Windows Server® 2008, Windows Vista®, Windows Server® 2003, Windows® XP (SP3 or later) WEPOS, WEPOS Ready 2009, WEPOS Ready 7			
		Linux	JavaPOS driver (Ver.1.10) *3	Linux SuSE9.3, SuSE11.4(will be available)			
	Printer Utility	Software to set the printer's setup items Thermal printer setup (Installer) Printer Utility (to set the printer's setup items) Status monitor *5 LAN Setting tool (IP Address setup) Android SDK 2.3.3 or later (For Bluetooth and LAN interface use) Android SDK 3.1 or later (For USB interface use) iOS SDK 6.1.3 or later (For Bluetooth and LAN interface use)					
RELIABILITY	MCBF(Mean-cycle-between-failure)	60million Lines *2					
	Print Head	100km *2					
	Cutter Life	1.5 million times of partial cut (75µm, Recommended Normal paper use) *2					
Power Requirements	DC Input: +24VDC±10% AC Input: 100 - 240V, 50/60Hz, Single Phase						
Power Consumption	During standby Dual Interface:3W or less, LAN Interface:4.5W or less						
	Average during operating 38W or less, Maximum 150W or less						
Ambient Temperature	Operation guarantee: 0 °C to 40°C Print quality guarantee: 5 °C to 35°C						
Relative Humidity	Operation guarantee: 10 % RH to 95% RH Print quality guarantee: 10 % RH to 85% RH						
Dimensions	- Standard Model: 144(W)x184(D)x120(H)mm, 5.7(W)x7.2(D)x4.7(H) inch						
Weight (without the packing box)	Standard Model: 1.2kg						
Cover Color	Black & White						
Option	Splash-proof cover, Wall hanging bracket						

*1 When using printer vertically, connectors of AC cable and Interface cable should be under the printer case. (The connector of AC Cable should be "Angled" shape.)
 *2 Operation condition is under 500 transactions/day(1 transaction=25LF + 1cut), 340days/year, print duty less than 9%, and the life of Head or Cutter with using specified paper by our company. If unspecified paper is used, the life of printer might be shortened than expected. Also, it might cause trouble for the printer.
 *3 JavaPOS Driver supports RS232C Interface and USB Interface
 *4 Bluetooth is not supported for Windows ServerR 2008, Windows ServerR2003 and WEPOS.
 *5 Status Monitor does not support Bluetooth interface.
 *6 OPOS Driver will be supported with Bluetooth.
 All specifications are subject to change without notice.



FUJITSU ISOTEC LIMITED.
 Printer Business Division
 135, Higashinozaki, Hobara-machi, Date-shi, Fukushima
 960-0695, JAPAN.
 Phone : (81-24)574-2236 Fax : (81-24)574-2382
 U R L : <http://jp.fujitsu.com/group/fit/en/>
 Contact E-mail : fit-gsm@cs.jp.fujitsu.com



FUJITSU THERMAL PRINTER FP-1000



Fujitsu Standalone Thermal Printer, *FP-1000*, achieves high reliability and good cost-efficiency for POS system Receipt printing and Order printing in commercial kitchens.

- High speed 180mm/s & High throughput
- High reliability mechanism
- Small footprint
- Cost saving mode
- Kitchen printer functions
- Multi Interface available (Triple / Dual Interface)
- Horizontal & Vertical Use
- Built-in Power supply model available
- Easy-to-use Installer & Utility
- Fujitsu Super Green Product & RoHS compliance

shaping tomorrow with you

Basic Performance

High Speed print 180mm/s

Printing speed of FP-1000 is the highest in its price range. This is achieved through our advanced mechanical design technology.

Throughput Enhancement

Optimum driver/firmware technology and High speed paper feed mechanism enhances the throughput. This enables customers not to waste time.

High Reliability Mechanism

FP-1000 passes the severe quality assurance tests, and ensures longevity with consistent print quality. The reliability is proven by the achievement of ISO9001.



Auto Cutter Life 1.5 million cuts
Thermal Head Life 100km
Printer (MCBF) 60million lines

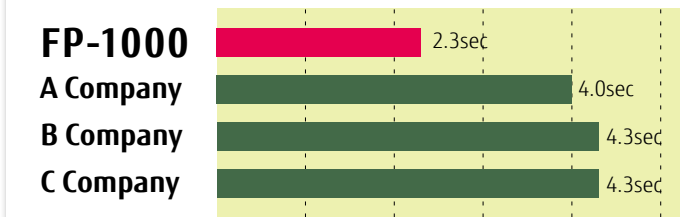
Auto Cutter

Auto cutter is included as a standard feature in the FP-1000. The cutting method is partial cut, where the center tab of paper is connected to the next page. This paper tab is small, and it does not spoil the look even after tearing the paper.



Comparison of throughput with other companies.

(Time from the start of data transfer to the completion of print)



Print condition: Windows XP, USB Interface, 210mm Receipt length with our test pattern

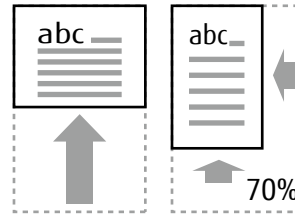
Various Functions

Running cost can be saved.

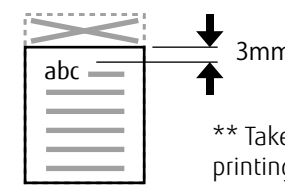
Reduced print function of Windows Driver and Top Margin reduced function save your paper. Running cost and environmental load can be reduced.

Reduced printing

- 1/4 reduced vertically
- 1/2 reduced vertically
- 80mm width paper → convert to 58mm



Top Margin 3mm



** Take off each receipt every time after printing in case of 3mm setting.

Kitchen Printer Functions

FP-1000 has various functions for Commercial Kitchens. Order receipts can be printed for Ordering systems.

Buzzer beeps when receipt printed.

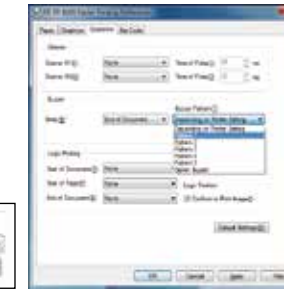
Buzzer is a standard equipment for the notice of order receipt printed. Various functions like Buzzer On/Off and 5 patterns of beep sound suite versatile restaurant environment.

Ex. You can select different sound patterns for Foods and beverages.



180 degree rotation print

180 degree rotation print by Windows Driver is available. You don't need to turn the paper up side down when you use the printer vertically.



Splash-proof option

When the printer is set on the Kitchen counter, Printer can be set vertically with using optional Splash-proof cover.



Wall-hanging option

With using Wall hanging bracket, you can set the printer on the wall for saving space in the kitchen.



Barcode / 2-Dimension code

FP-1000 supports Barcodes and 2-Dimension codes (QR code).

Large Logo Store Memory

Image data can be stored up to 576KB. You can store several Logo data.

Small Footprint

Compact

FP-1000 achieves the compact outline W144xD184xH120mm. ** In case of AC Adapter externally connected. This contributes the small shop which has a limited space for installation. (-13% compared to our company models, the smallest among the same class printers.)

Easy to store Interface Connector

FP-1000 has a recess to store Interface Connector under the case. This eliminates the space requirement. It is designed not to protrude from the backside view of the printer.



Flexibility

Multi Interface available (Triple / Dual Interface)

Flexible Multi-Interface

Interfaces can be selected from three models. Triple (RS232C+USB+LAN)/Dual (RS232C+USB)/Dual (Bluetooth+USB)

Triple Interface



Dual Interface



Dual Interface (USB + Bluetooth)



One model accommodates to the system with several interfaces required.

It is not necessary to choose each interface model in the system configuration which requires several interfaces because Triple Interface model is equipped with three interfaces as standard. For example, Food service system requires order printing with LAN interface at kitchen and receipt printing with USB interface. Network POS system which also requires several interfaces can be used with one model, Triple Interface model.

Food service system



RS232C is selectable, 25pins or 9 pins

RS232C(9pin) is included in Triple Interface model, and RS232C(25pin) is included in Dual Interface model.

Easy Setup – LAN setting tool

Easy to set IP address of printer by the attached installer or LAN Setting tool.



Status Monitor – Easy to check printer on network

Status Monitor pops up a message of the printer status like cover open or paper out, and monitoring the printer status is easy from the remote place.



Android™ SDK and iOS SDK Available

Not only Windows Driver, SDKs (Software Development Kit) for Android and iOS are provided. (See the chart below for the available interfaces.)



Available interface of Android SDK			Available interface of iOS SDK		
USB	LAN	Bluetooth	USB	LAN	Bluetooth
✓	✓	✓	-	✓	✓

Horizontal/Vertical Use

Depending on using environment, FP-1000 can be set horizontally or vertically. When using it vertically, printing direction can be rotated 180 Degrees. Paper near end can be detected for both horizontal and vertical settings.



Versatile font size like 180dpi emulation size

3 types of Font size such as Font A, B, and C are available. Also, you can flexibly set the font like Extended font with approximately 180dpi size, and select Pitch and Space between characters. (using OPOS Driver)

Various paper available to print

FP-1000 enables you to choose various kinds of paper; Print Width 58mm/80mm, Maximum outside diameter φ83mm, Paper thickness 65μm~85μm.

Low-impact to Environment

Super Green Product

FP-1000 passes our own severe environmental standard, and it is called "Super Green Product". The use of Recyclable material, Material Label attachment and Downsizing supports the environment.

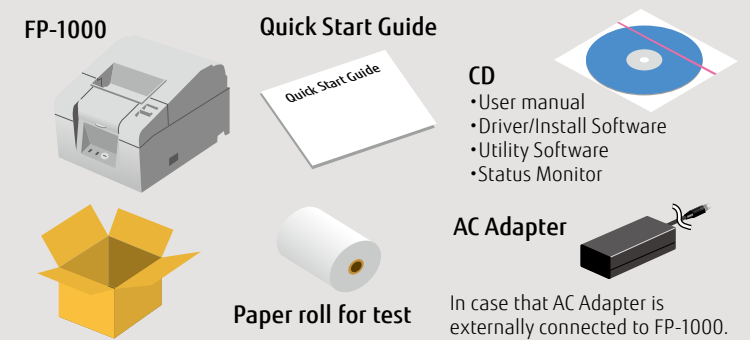
Not containing Hazardous Substances

In addition to RoHS directives in Europe, FP-1000 complies our own strict standard of Prohibited substance standard.

Energy Saving

FP-1000 complies with the New Energy Star Program. (Built-in Power Supply Model)

Accessories in the box



Connect cables

Connect the interface cable and AC adapter.

Switch on

Switch on the printer power.

Drop-in Paper set

Just throw the paper inside the printer, and close the lid. Paper feeding route is opened, and it makes the maintenance easy.



Driver/Software Installation

Windows Driver, OPOS Driver and Utility Software can be easily installed. Just follow the user guide in original Installer.

IP address setting in Network environment can be quickly and easily setup with standard LAN setup tool.



Print